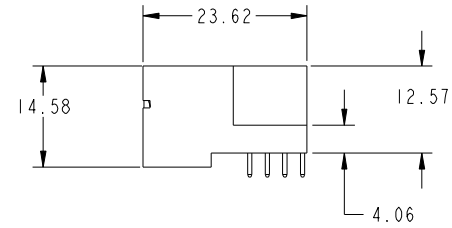
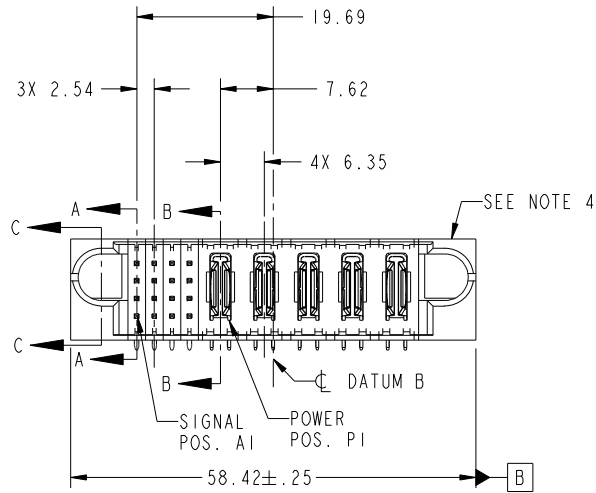


Tous droits strictement réservés. Reproduction ou communication a des tiers interdite sous quelque forme que ce soit sans autorisation écrite du propriétaire. Propriete de c FCI. Droits de reproduction FCI.



All rights strictly reserved. Reproduction or issue to third parties in any form whatever is not permitted without written authority from the proprietor. Property of FCI. Copyright FCI.

PRODUCT NO.	ROWS	SIGNAL				POWER					E2		
		E1	1	2	3	4	P1	P2	P3	P4		P5	
51939-022... NOTE: 3	D C B A		H	H	H	H	PA						
		G	G	G	G		PS						
		F	F	F	F			PS					
		E	E	E	E				PS			PA	



CODE	DIM "M" MATING LENGTH	CONTACT TYPE	PIN TYPE
E	[5.59]	SIGNAL	DATA
F	[5.59]	SIGNAL	DATA
G	[5.59]	SIGNAL	DATA
H	[5.59]	SIGNAL	DATA
J	[4.32]	SIGNAL	ENABLING
PA	[N/A]	POWER	LONG WIPE
PS	[N/A]	POWER	SHORT WIPE

mat'l code				SEE NOTE		tolerances unless otherwise specified		CUSTOMER	
ltr	ecn no.	dr	date	linear	angles	dr	enr	chr	appd
A	V21312	CGD	08/09/02	0.X ± 0.5			J. ALLISON	J. ALLISON	J. ALLISON
B	DG05-0351	CS	09/22/05	0.XX ± 0.25					
C	DG06-0008	JMG	01/07/06	0.XXX ± 0.10	0° ± 2°				
D	DG08-0272	JW	09/27/08						

projection		title		product family		code	
	COPY	16S + 5P RIGHT ANGLE SOLDER HEADER		PwrBlade	213		
MIM		size	dwg no	code		sheet	
scale 1:1		A	51939-022	213		1 of 4	

sheet index	revision sheet	D	D	D	D
		1	2	3	4

Pro/E

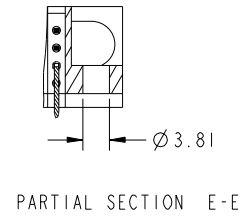
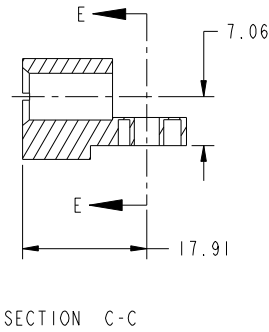
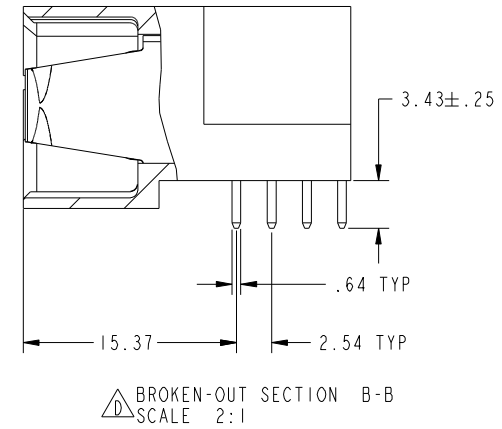
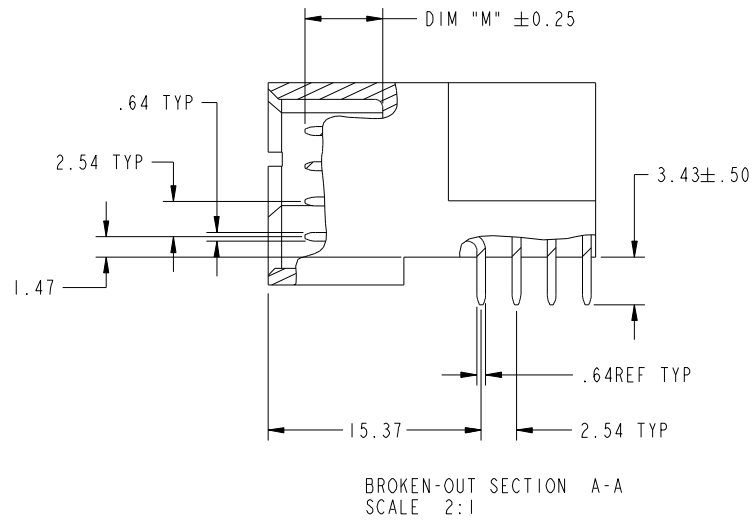
cage code 22526

Tous droits strictement reserves. Reproduction ou communication a des tiers interdite sous quelque forme que ce soit sans autorisation écrite du propriétaire. Propriete de c FCI. Droits de reproduction FCI.



All rights strictly reserved. Reproduction or issue to third parties in any form whatever is not permitted without written authority from the proprietor. Property of FCI. Copyright FCI.

PRODUCT NUMBER
51939-022--
NOTE: 3



mat'l code		SEE NOTE		tolerances unless otherwise specified		CUSTOMER		www.fciconnect.com	
ltr	ecn no.	dr	date	linear	0.X ±0.5	COPY		title	
D					0.XX ±0.25	projection		16S + 5P RIGHT ANGLE SOLDER HEADER	
				angles	0.XXX ±0.10			product family PwrBlade code	
		dr	C. DAILY 08/09/02		0° +2°			size 213	
		enr	J. ALLISON 08/09/02			scale		sheet	
		chr	J. ALLISON 08/09/02			1:1		2	
		appd	J. ALLISON 08/09/02			A		51939-022	
sheet index	revision sheet								

cage code 22526

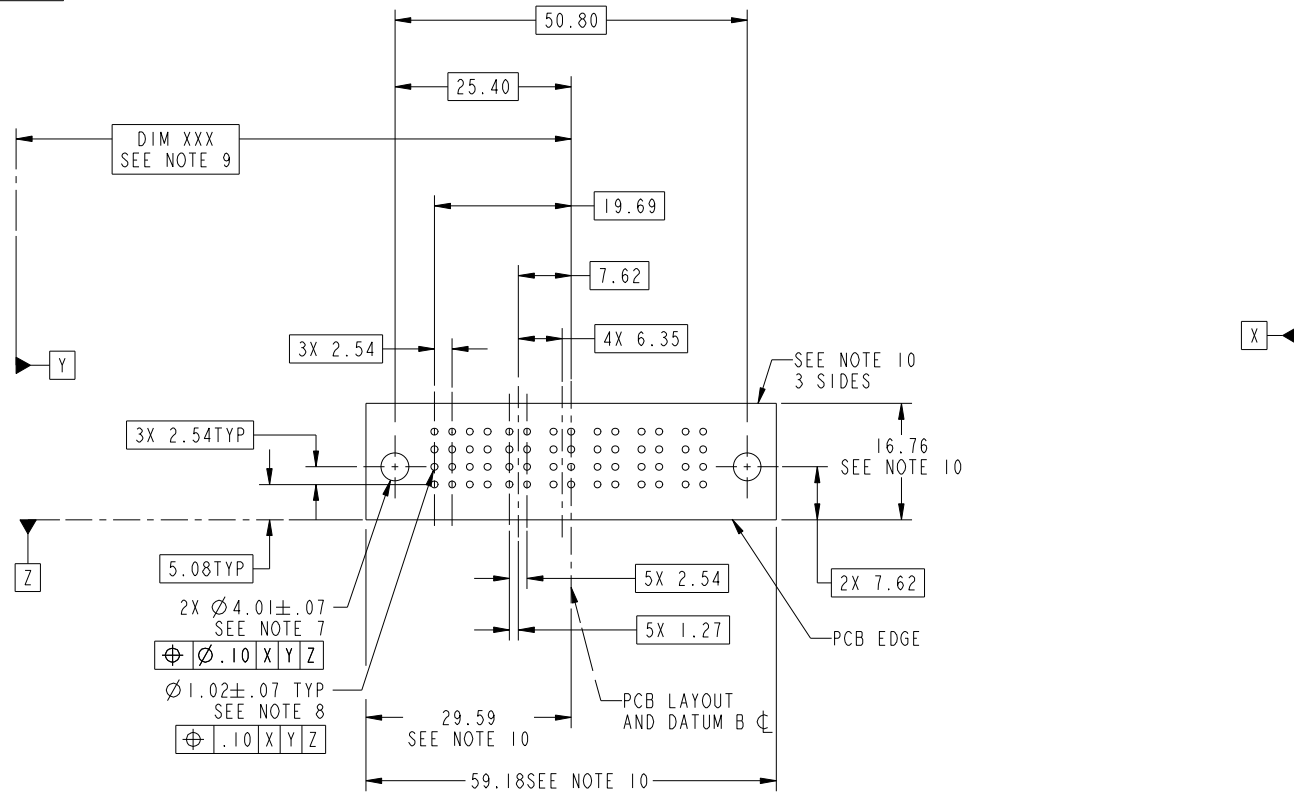
Pro/E

Tous droits strictement reserves. Reproduction ou communication a des tiers interdite sous quelque forme que ce soit sans autorisation écrite du propriétaire. Propriete de c FCI. Droits de reproduction FCI.



All rights strictly reserved. Reproduction or issue to third parties in any form whatever is not permitted without written authority from the proprietor. Property of FCI. Copyright FCI.

PRODUCT NUMBER
51939-022--
NOTE: 3



RECOMMENDED PCB LAYOUT

mat'l code		SEE NOTE		tolerances unless otherwise specified		CUSTOMER		FCI www.fciconnect.com	
ltr	ecn no.	dr	date	linear	0.X ± 0.5	COPY		title	
D					0.XX ± 0.25	projection		16S + 5P RIGHT ANGLE SOLDER HEADER	
				angles	0.XXX ± 0.10	MIM		product family PwrBlade code	
				dr	0° + 2°	scale		size	
				enr	C. DAILY 08/09/02	1:1		dwg no	
				chr	J. ALLISON 08/09/02			213	
				appd	J. ALLISON 08/09/02			sheet	
								3	
sheet index	revision sheet							cage code	
								22526	

Pro/E

cage code
22526

Tous droits strictement reserves. Reproduction ou communication a des tiers interdite sous quelque forme que ce soit sans autorisation écrite du propriétaire. Propriete de c FCI. Droits de reproduction FCI.



All rights strictly reserved. Reproduction or issue to third parties in any form whatever is not permitted without written authority from the proprietor. Property of FCI. Copyright FCI.

PRODUCT NUMBER
51939-022--
NOTE: 3

NOTES:

1. DIMENSIONS AND TOLERANCES ARE IN ACCORDANCE WITH ASME Y14.5M, 1994 UNLESS OTHERWISE SPECIFIED.

CONNECTOR NOTES:

2. HOUSING MATERIAL: UL 94 V-0 GLASS FILLED
HIGH-TEMP THERMOPLASTIC
POWER CONTACT MATERIAL: COPPER ALLOY
SIGNAL PIN MATERIAL: COPPER ALLOY

3 PLATING
SEE ITEM 1 & 2 IN PRINT 10064183 FOR PLATING SPEC OF 51939-022; 51939-022LF PRESPECTIVELY

4. MANUFACTURER'S NAME, P/N, AND DATE CODE TO APPEAR ON THIS SURFACE.

5. PRODUCT SPECIFICATION GS-12-149.
APPLICATION SPECIFICATION BUS-20-067.

PCB NOTES:


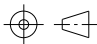

6. ALL HOLE DIAMETERS ARE FINISHED HOLE SIZE.
7. MOUNTING HOLES, WHERE APPLICABLE, ARE UNPLATED.

8. $\varnothing 1.151 \pm 0.025$ DRILLED HOLES PLATED WITH)
0.008 MIN SnPb OR Sn OVER 0.03
TO 0.08 Cu PLATING TO ACHIEVE
 $\varnothing 1.02 \pm .07$ HOLE.

9. "DIM XXX" TO BE DETERMINED BY THE CUSTOMER.

10. CONNECTOR KEEP-OUT ZONE.

11 Δ SYMBOL WILL BE NEXT TO ANY DIMENSION, VIEW, OR NOTE WHICH HAS BEEN MODIFIED WITH THE CURRENT DRAWING REVISION.

mat'l code				SEE NOTE	tolerances unless otherwise specified	CUSTOMER	 www.fciconnect.com	
ltr	ecr no.	dr	date	linear	0.X ± 0.5	COPY	title	
D					0.XX ± 0.25	projection	16S + 5P	
				angles	0.XXX ± 0.10		RIGHT ANGLE SOLDER HEADER	
				dr	0° + 2°		product family	PwrBlade
				enr	C. DAILY 08/09/02	scale	size	code
				chr	J. ALLISON 08/09/02	1:1	dwg no	213
				appd	J. ALLISON 08/09/02	A	51939-022	sheet
sheet index	revision sheet							4

cage code 22526

Pro/E